

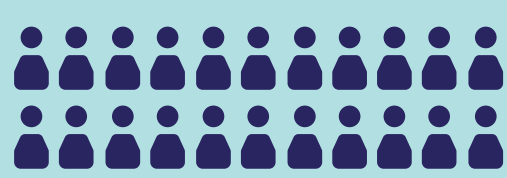
Researcher Workbench

COPE Survey Data: By The Numbers



All of Us released its recurring COVID-19 Participant Experience (COPE) survey to learn more about changes in participants' daily life, health, and well-being throughout the pandemic. Registered researchers can access this data in the Researcher Workbench and use it as part of an integrated dataset to explore potential associations across a variety of factors, from genetics to geography to mental health.

COPE Survey Data Currently Available in the Researcher Workbench



Nearly **100,000** participants responded to

*45,547 participants responded to three or more surveys.



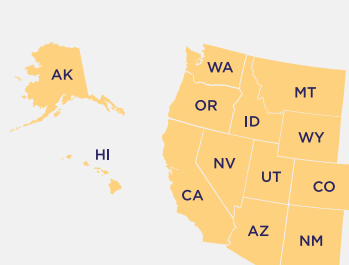
one or more of the **six** COPE surveys administered between May 2020 and March 2021

Topics Covered

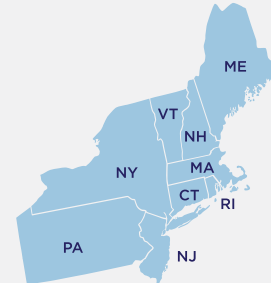


Demographics of Participants Who Responded to At Least One COPE Survey

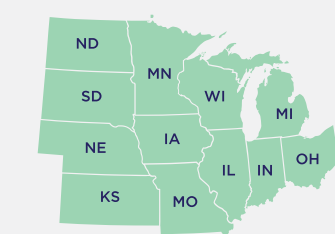
By Region



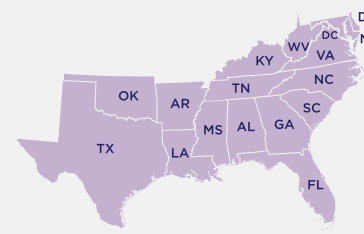
23,358 were from the **WESTERN U.S.**



28,356 were from the **NORTHEASTERN U.S.**

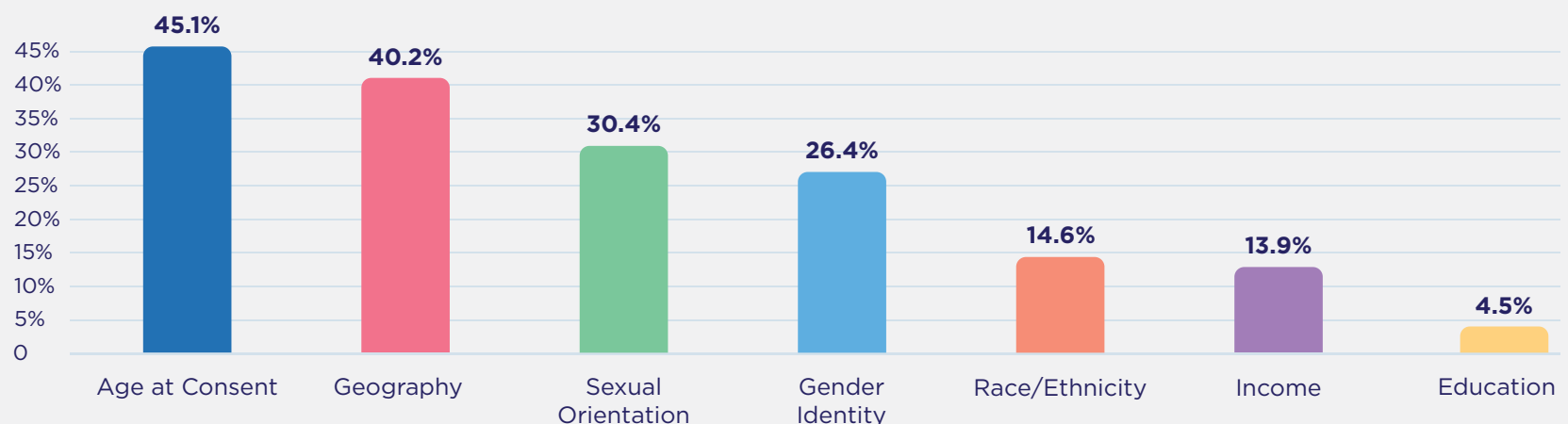


25,884 were from the **MIDWESTERN U.S.**



17,067 were from the **SOUTHERN U.S.**

By Percentage of Eligible Participants from Communities Underrepresented in Biomedical Research (UBR)



*To learn more about how All of Us defines UBR communities, read our FAQs at ResearchAllOfUs.org/frequently-asked-questions.

Top COVID-19 or Flu-Like Symptoms Reported

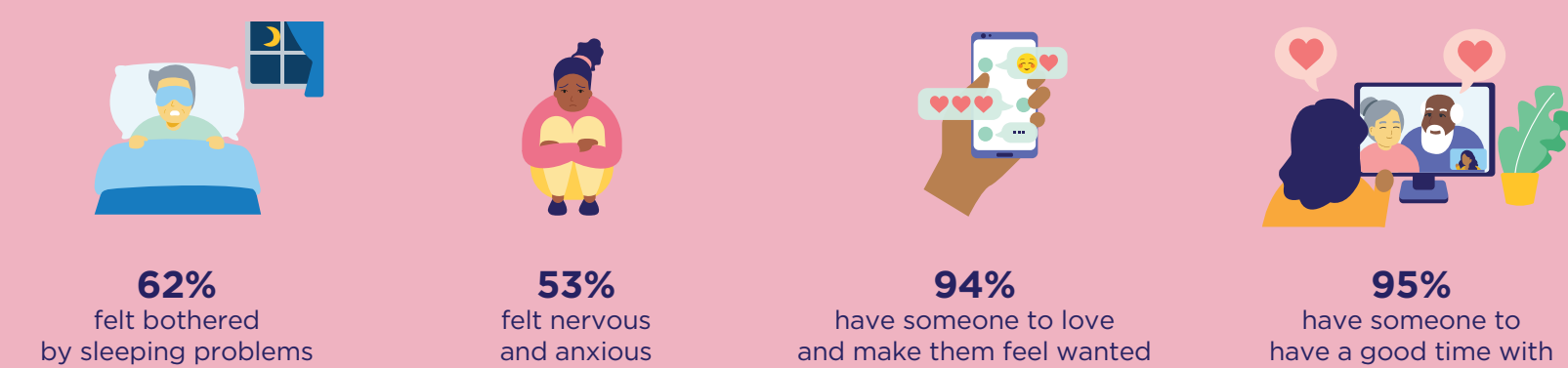
9,129 people reported symptoms, including:



*Participants could select multiple symptoms.

Mental Health

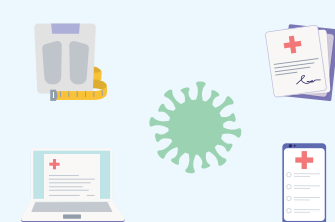
The COPE data represents the biggest infusion of mental health data into the Researcher Workbench so far. Insights include:



Embedded in the survey were resources for participants struggling with emotional distress, including suicide prevention tools.

*Participants could select multiple symptoms.

COVID-19 Experiences Across the Dataset



The COPE survey data can be readily linked to other data within the Researcher Workbench—including electronic health records, genomics, physical measurements, and wearables data—enabling researchers to get a more holistic view of program participants' COVID-19 experiences.

"The COPE survey offered a unique opportunity to understand, in real-time, how a large and diverse set of individuals experienced the greatest public health crisis we've seen in our lives, including its physical, mental, and emotional impact over time."

- Holly Garriock, PhD, Chief Cohort Development Officer, All of Us Research Program, National Institutes of Health

The COPE survey was the first survey to collect information across the All of Us participant cohort in a repeated way over time. Additional information about COVID-19 diagnoses, testing and vaccines and symptoms will be available in future data releases. Studies utilizing COPE data have already been published in multiple peer-reviewed journals, with more in development.

Learn more about COVID-19 diagnoses, testing and symptoms, views and experiences with COVID-19, and how you can access the All of Us dataset at: ResearchAllOfUs.org/discover/covid-19-research-initiatives

Data as of March 2022

All of Us and the All of Us logo are registered service marks of the U.S. Department of Health and Human Services.