

Medicaid eligibility pathways, CY 2020

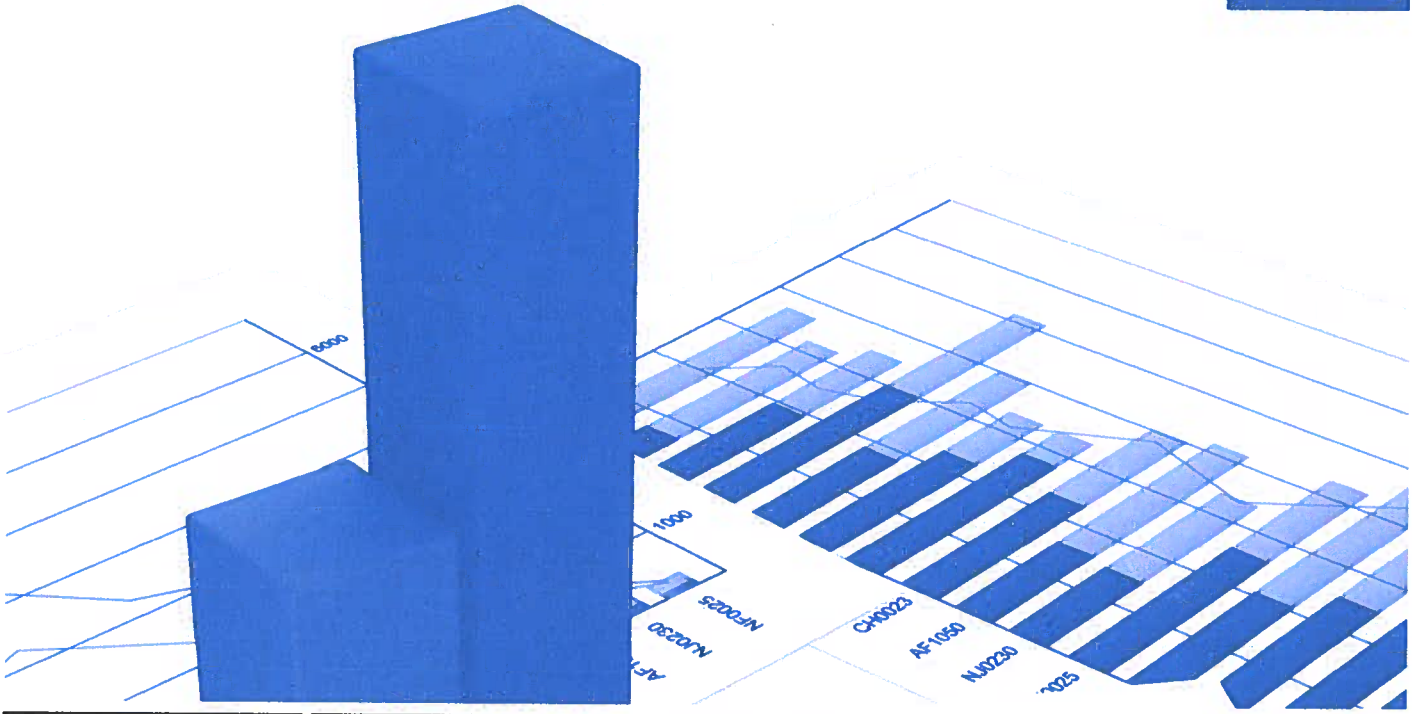
| Medicaid eligibility group | Dual-eligible beneficiaries | | | Non-dual Medicaid beneficiaries (disabled, under age 65) |
|--------------------------------|-----------------------------|-----------------|-------------------|--|
| | All | Under age 65 | Ages 65 and older | |
| SSI | 36% | 36% | 36% | 85% |
| Poverty related | 43 | 42 | 43 | 5 |
| Medically needy | 6 | 5 | 7 | 4 |
| Section 1115 waiver | <1 | <1 | <1 | <1 |
| Special income limit and other | 14 | 17 | 13 | 5 |

Note: CY (calendar year), SSI (Supplemental Security Income). Exhibit includes all dual-eligible beneficiaries (fee-for-service, managed care, and end-stage renal disease). The non-dual Medicaid beneficiary category excludes nondisabled Medicaid beneficiaries under age 65 and Medicaid beneficiaries ages 65 and older who did not have Medicare coverage. Percentages may not sum to 100 due to rounding.

- Overall, most individuals dually eligible for Medicare and Medicaid benefits in CY 2020 qualified for Medicaid benefits through receipt of SSI benefits (36 percent) or through poverty-related eligibility pathways (43 percent).
- In contrast to dual-eligible beneficiaries, most non-dual Medicaid beneficiaries eligible on the basis of a disability (85 percent) qualified for Medicaid benefits based on receipt of SSI benefits.
- Compared with those under age 65, dual-eligible beneficiaries ages 65 and older were more likely to have been eligible for Medicaid because they have high medical costs (medically needy group) and less likely to qualify because they require an institutional level of care (special income limit and other group).

FEBRUARY

2023



DATA BOOK

BENEFICIARIES DUALLY ELIGIBLE FOR MEDICARE AND MEDICAID

A data book jointly produced by the Medicare Payment Advisory Commission and the Medicaid and CHIP Payment and Access Commission

| | | | | |
|-------|-------|-------|-------|-------|
| 1000 | 1000 | 1000 | 1000 | 1000 |
| 1500 | 1500 | 1500 | 1500 | 1500 |
| 2000 | 2000 | 2000 | 2000 | 2000 |
| 2500 | 2500 | 2500 | 2500 | 2500 |
| 3000 | 3000 | 3000 | 3000 | 3000 |
| 3500 | 3500 | 3500 | 3500 | 3500 |
| 4000 | 4000 | 4000 | 4000 | 4000 |
| 4500 | 4500 | 4500 | 4500 | 4500 |
| 5000 | 5000 | 5000 | 5000 | 5000 |
| 5500 | 5500 | 5500 | 5500 | 5500 |
| 6000 | 6000 | 6000 | 6000 | 6000 |
| 6500 | 6500 | 6500 | 6500 | 6500 |
| 7000 | 7000 | 7000 | 7000 | 7000 |
| 7500 | 7500 | 7500 | 7500 | 7500 |
| 8000 | 8000 | 8000 | 8000 | 8000 |
| 8500 | 8500 | 8500 | 8500 | 8500 |
| 9000 | 9000 | 9000 | 9000 | 9000 |
| 9500 | 9500 | 9500 | 9500 | 9500 |
| 10000 | 10000 | 10000 | 10000 | 10000 |
| 11000 | 11000 | 11000 | 11000 | 11000 |
| 12000 | 12000 | 12000 | 12000 | 12000 |
| 13000 | 13000 | 13000 | 13000 | 13000 |
| 14000 | 14000 | 14000 | 14000 | 14000 |
| 15000 | 15000 | 15000 | 15000 | 15000 |
| 16000 | 16000 | 16000 | 16000 | 16000 |
| 17000 | 17000 | 17000 | 17000 | 17000 |
| 18000 | 18000 | 18000 | 18000 | 18000 |
| 19000 | 19000 | 19000 | 19000 | 19000 |
| 20000 | 20000 | 20000 | 20000 | 20000 |
| 21000 | 21000 | 21000 | 21000 | 21000 |
| 22000 | 22000 | 22000 | 22000 | 22000 |
| 23000 | 23000 | 23000 | 23000 | 23000 |
| 24000 | 24000 | 24000 | 24000 | 24000 |
| 25000 | 25000 | 25000 | 25000 | 25000 |
| 26000 | 26000 | 26000 | 26000 | 26000 |
| 27000 | 27000 | 27000 | 27000 | 27000 |
| 28000 | 28000 | 28000 | 28000 | 28000 |
| 29000 | 29000 | 29000 | 29000 | 29000 |
| 30000 | 30000 | 30000 | 30000 | 30000 |
| 31000 | 31000 | 31000 | 31000 | 31000 |
| 32000 | 32000 | 32000 | 32000 | 32000 |
| 33000 | 33000 | 33000 | 33000 | 33000 |
| 34000 | 34000 | 34000 | 34000 | 34000 |
| 35000 | 35000 | 35000 | 35000 | 35000 |