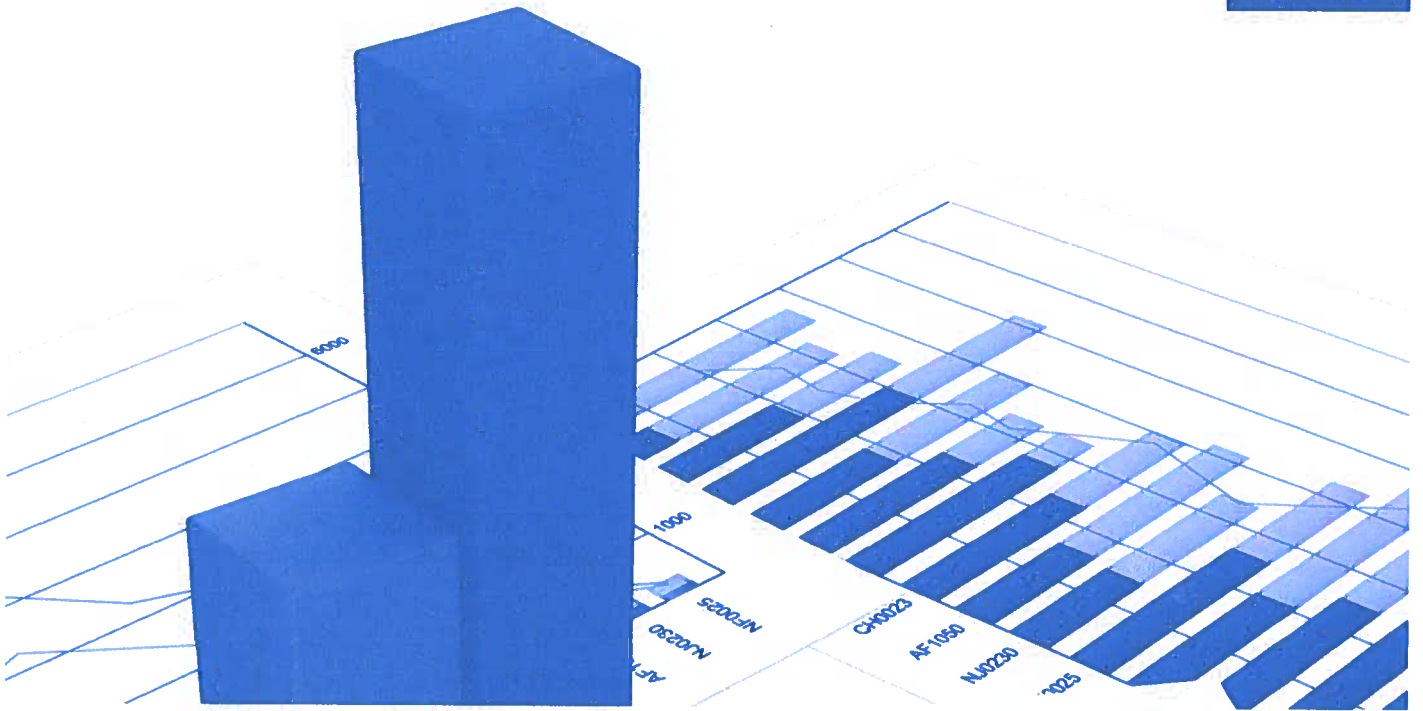


Selected chronic conditions for FFS dual-eligible beneficiaries by age group, CY 2020

Condition	FFS dual-eligible beneficiaries	
	Under age 65	Ages 65 and older
Cognitive impairment		
Alzheimer's disease or related dementia	4%	19%
Intellectual disabilities and related conditions	11	2
Physical health conditions		
Diabetes	23%	32%
Heart failure	8	19
Hypertension	38	60
Ischemic heart disease	13	28
Behavioral health conditions		
Anxiety disorders	34%	21%
Bipolar disorder	15	4
Depression	33	24
Schizophrenia and other psychotic disorders	13	5

Note: FFS (fee-for-service), CY (calendar year). Chronic conditions are identified using Medicare FFS claims. Exhibit excludes beneficiaries enrolled in Medicare Advantage plans because Medicare FFS claims are not available for those individuals. Beneficiaries with end-stage renal disease are also excluded.

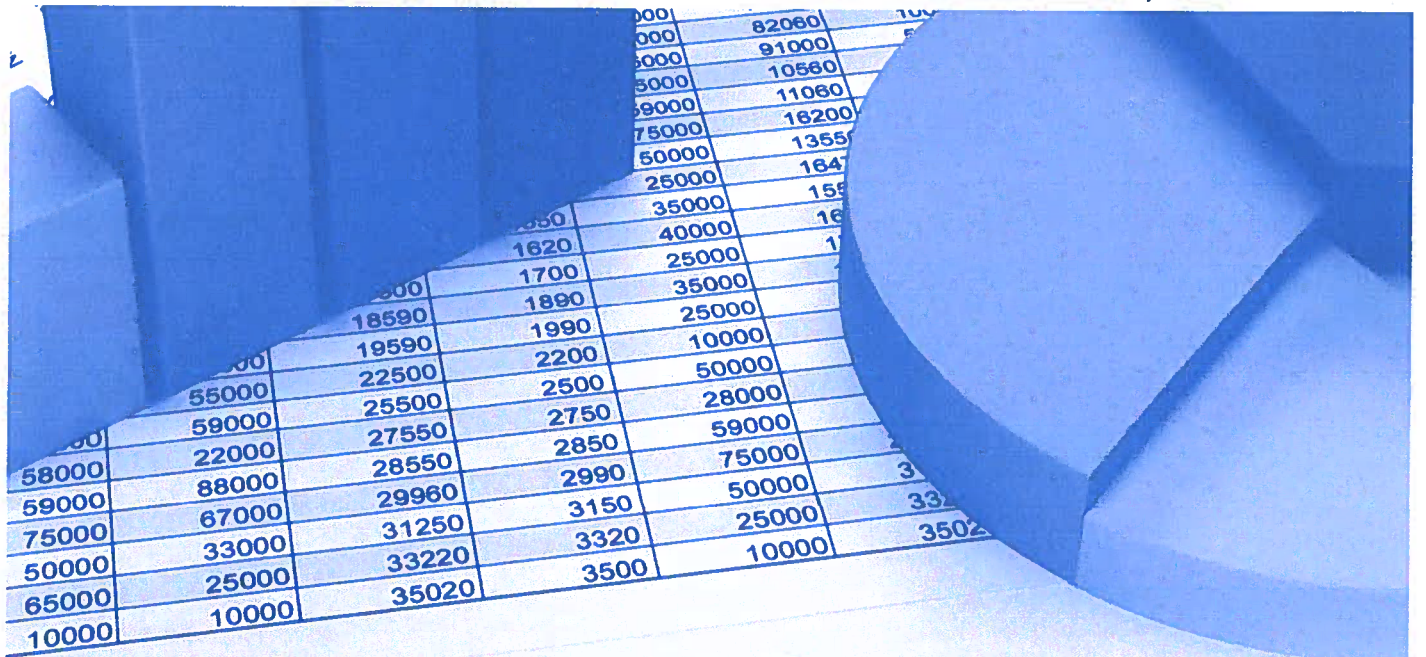
- The share of individuals dually eligible for Medicare and Medicaid benefits with selected chronic conditions differed between those under age 65 versus those ages 65 and older.
- With respect to cognitive impairment, Alzheimer's disease or related dementia was much more common among the older dual-eligible beneficiaries (19 percent vs. 4 percent). More dual-eligible beneficiaries under age 65 had an intellectual disability (11 percent vs. 2 percent).
- Compared with the population under age 65, those ages 65 and older generally had higher rates of physical health conditions such as diabetes, heart failure, hypertension, and ischemic heart disease.
- Behavioral health conditions—anxiety disorders, bipolar disorder, depression, and schizophrenia and other psychotic disorders—were consistently more common among the dual-eligible population under age 65 than those ages 65 and older.



DATA BOOK

BENEFICIARIES DUALY ELIGIBLE FOR MEDICARE AND MEDICAID

A data book jointly produced by the Medicare Payment Advisory Commission and the Medicaid and CHIP Payment and Access Commission



Medicare Payment
Advisory Commission



Medicaid and CHIP Payment
and Access Commission